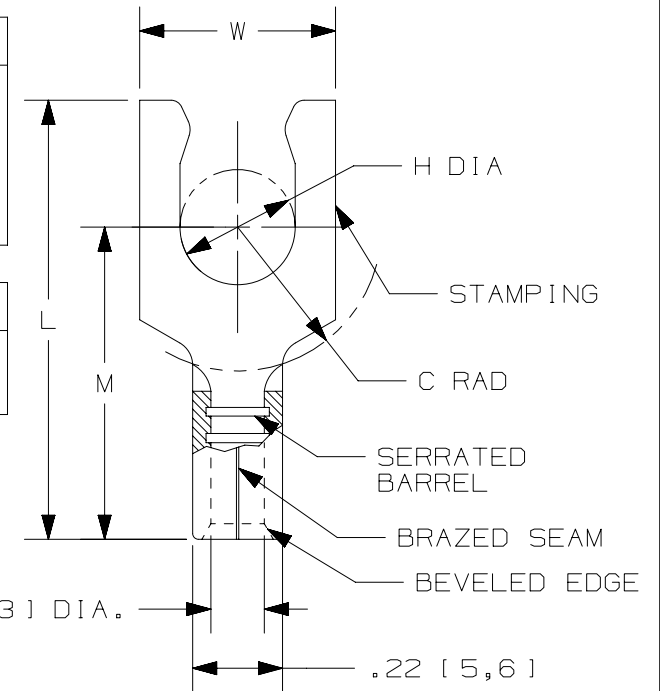


THIS COPY IS PROVIDED ON A RESTRICTED BASIS AND IS NOT TO BE USED IN ANY WAY DETRIMENTAL TO THE INTERESTS OF PANDUIT CORP.

PANDUIT PART #	STUD SIZE	DIMENSIONS in. [mm]				
		L ± .02 [0,5]	W ± .01 [0,3]	C ± .02 [0,5]	M ± .02 [0,5]	H ± .01 [0,3]
P10-6LF	#6	.77 [19,6]	.30 [7,6]	.23 [5,8]	.53 [13,5]	.14 [3,6]
P10-8LF	#8	.79 [20,1]	.30 [7,6]	.23 [5,8]	.53 [13,5]	.16 [4,1]
P10-10LF	#10	.79 [20,1]	.34 [8,6]	.23 [5,8]	.53 [13,5]	.19 [4,8]
P10-14LF	1/4"	.92 [23,4]	.46 [11,7]	.33 [8,4]	.63 [16,0]	.25 [6,4]

UL & CSA TOOLS
CT-100A
CT-200
CT-600-A (CT-570CH)
CT-1570
CT-1701 (P10)
CT-2500 (CT-2570CH)

PANDUIT APPROVED TOOLS
CT-160
CT-260



NOTES:

- UL LISTED & CSA CERTIFIED FOR:
 - #14-10 AWG [2,5-6,0 mm²] SOLID OR STRANDED COPPER WIRE
 - 302°F [150°C] MAX OPERATING TEMPERATURE
 - 2000 VOLTS MAX
- SEE www.panduit.com FOR PACKAGE QUANTITIES
- MATERIAL:
 - STAMPING: .04" [1,0] THK COPPER, TIN PLATED
- DIMENSIONS IN BRACKETS ARE METRIC EQUIVALENT
- WIRE STRIP LENGTH: $9/32" \begin{matrix} +1/32 \\ -0 \end{matrix}$ [7,1mm^{+0,8}₋₀]



TITLE	
LOCKING FORK TERMINALS, NON- INSULATED, #14-10	
CUSTOMER DRAWING	
ITEM REVISION NAME	N41287BA/11
DATASET FILE NAME	N41287BA_DC/10A
UNLESS OTHERWISE SPECIFIED, DIMENSIONAL TOLERANCES ARE: IN [mm]	
.X ±	.XXX ±
.XX ±	ANGLES ±
THIRD ANGLE PROJECTION	
DRAWING NUMBER: A41287	
DRAWN BY	DAW
DATE	-
CHK	-
SCALE	N.T.S.
SHEET 1 OF 1	
SIZE	A

REV	DATE	BY	CHK	APR	DESCRIPTION	ECN
11	5/17	JHNU	TMR	RGB	ADDED CSA BACK TO DWG, UPDATED TOOL CHART FORMAT	N41287BA-A41287
10	06/14	MBY	JHNU	RGB	REVISED NOTES, MOVED TOOLS TO TABLE, REVISED CERTIFICATION	N41287BA-A41287
09	10/12	JBN	LSM	VMB	REVISED NOTES. UPDATED DRAWING TO CURRENT STANDARDS.	A41287

D10100DA/12