

THIS DRAWING IS UNPUBLISHED.

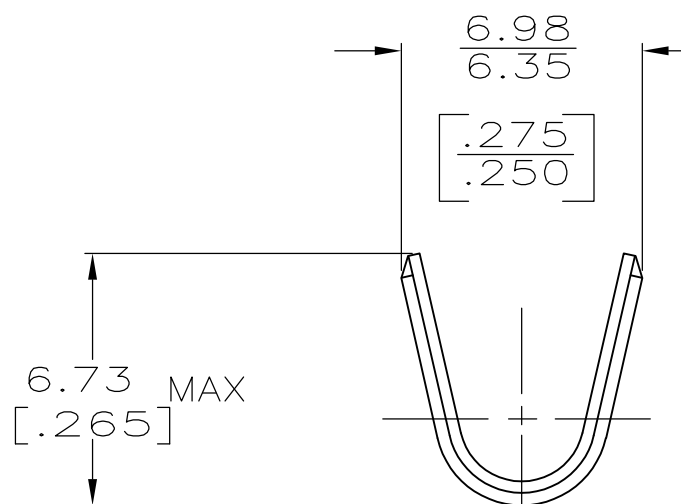
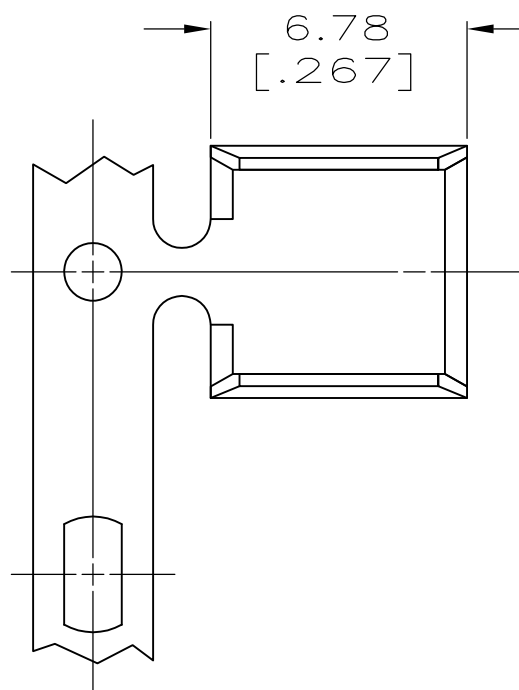
RELEASED FOR PUBLICATION

© COPYRIGHT - By -

ALL RIGHTS RESERVED.


LOC	DIST	REVISIONS			
P	LTR	DESCRIPTION	DATE	DWN	APVD
AF	50				
	E2	REVISED PER ECR-11-025270	20DEC11	KH	GJ

- 1 PRODUCT PROVIDED IN STRIP FORM ON REELS;  
BREAKS MAY BE PRESENT
  - 2 REF CRIMPING INFO:  
4.57 [.180] CRIMP WIDTH AT CRIMP HEIGHT = ( CMA+23,100 ) /285,700  
5.58 [.220] CRIMP WIDTH AT CRIMP HEIGHT = ( CMA+24,500 ) /330,000
  - 3 REF SIMILAR SLICE P/N 1217967-X WITH SERRATIONS
- △ 4 LUBRICATION MAY BE REQUIRED TO FACILITATE CRIMPING. A PRODUCT LUBRICANT APPLICATOR IS AVAILABLE FOR TE CONNECTIVITY TERMINATION EQUIPMENT.



0.635±0.025  
[.025±.001]

TIN	2.5-8.1mm <sup>2</sup>	63625-2
-	5,000-16,000 CMA	63625-1
FINISH	WIRE RANGE △ 4	PART NO

THIS DRAWING IS A CONTROLLED DOCUMENT.		DWN	P FORTNEY	10/3/91	 <b>TE Connectivity</b>												
DIMENSIONS: INCHES		CHK	MS FEHER	10/4/91				NAME									
TOLERANCES UNLESS OTHERWISE SPECIFIED:		APVD	R WEAVILL	10/4/91				SPLICE									
<table border="0"> <tr><td>0 PLC</td><td>± -</td></tr> <tr><td>1 PLC</td><td>± -</td></tr> <tr><td>2 PLC</td><td>± 0.25 [.010]</td></tr> <tr><td>3 PLC</td><td>± -</td></tr> <tr><td>4 PLC</td><td>± -</td></tr> <tr><td>ANGLES</td><td>± -</td></tr> </table>		0 PLC	± -	1 PLC				± -	2 PLC	± 0.25 [.010]	3 PLC	± -	4 PLC	± -	ANGLES	± -	PRODUCT SPEC
0 PLC	± -																
1 PLC	± -																
2 PLC	± 0.25 [.010]																
3 PLC	± -																
4 PLC	± -																
ANGLES	± -																
MATERIAL	BRASS	FINISH	SEE TABLE	APPLICATION SPEC	114-2088	SIZE	A3	CAGE CODE	00779	DRAWING NO	C-63625	RESTRICTED TO	-				
CUSTOMER DRAWING						SCALE	5:1	SHEET	1 OF 1	REV	E2						