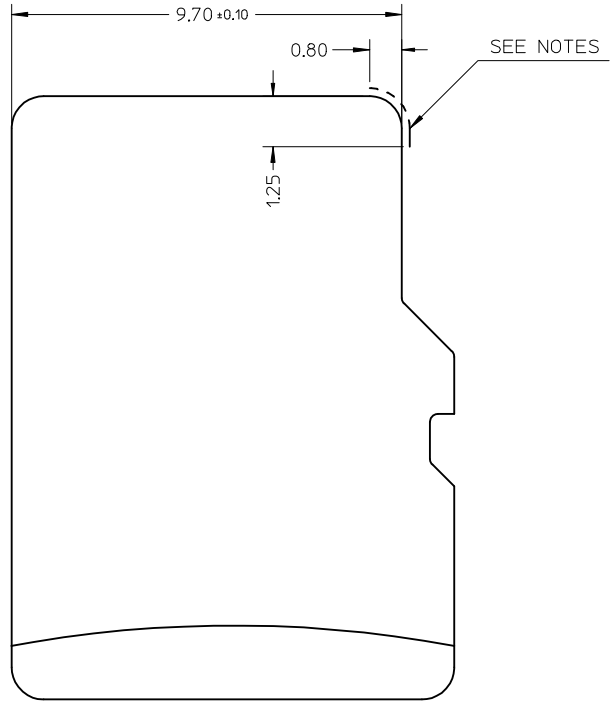
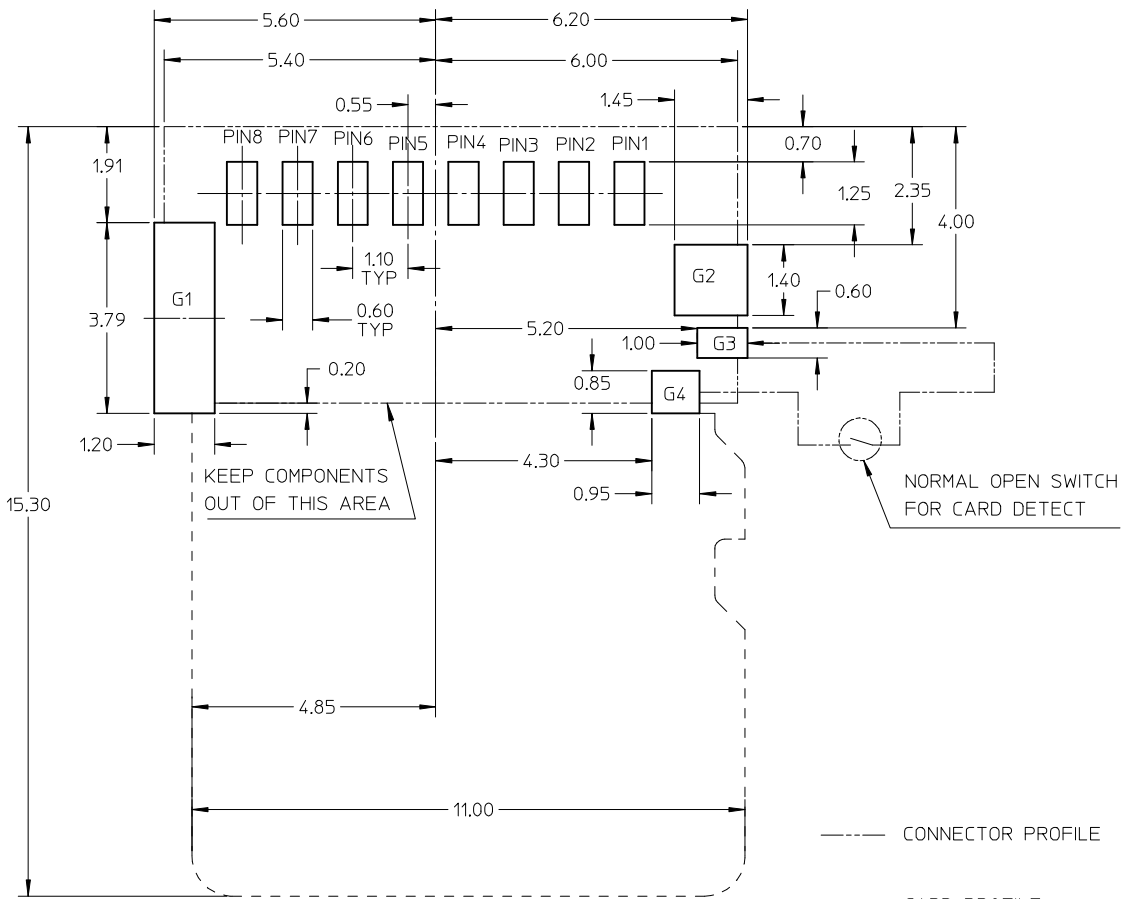


NOTES:

- MATERIAL:
 - 1-1 HOUSING: LCP, 30% G/F, UL 94V-0, BLACK
 - 1-2 SIGNAL TERMINAL AND DETECT TERMINAL: PHOSPHOR BRONZE
 - 1-3 METAL SHELL: STAINLESS STEEL
- FINISH:
 - 2-1 SIGNAL TERMINAL: 125 MICRON NICKEL MIN UNDER-PLATED, CONTACT AREA SEE TABLE, GOLD FLASH ON SOLDER AREA.
 - 2-2 METAL SHELL: GOLD FLASH PLATED OVER NICKEL ON SOLDER AREA.
 - 2-3 DETECT PIN: 125 MICRON NICKEL MIN UNDER-PLATED, GOLD FLASH ON CONTACT AREA, TIN PLATED ON SOLDER AREA.
- PRODUCT SPECIFICATION: PS-47309-001.
- PACKAGE SPECIFICATION: SEE TABLE.
- PRODUCT COMPLIANT TO RoHS DIRECTIVE 2002/95/EC AND ELV 2000/53/EC.

PART NUMBER	DIM A	DIM B	CONTACT AREA PLATING	PACKAGE SPECIFICATION
47309-0375	3.75	2.55	0.38 MICRON MIN. GOLD	PK-47309-375
47309-3751			0.76 MICRON MIN. GOLD	
47309-8751			0.1 MICRON MIN. GOLD	
47309-0355	3.55	2.35	0.38 MICRON MIN. GOLD	PK-47309-335
47309-3551			0.76 MICRON MIN. GOLD	
47309-8551			0.1 MICRON MIN. GOLD	
47309-0335	3.35	2.15	0.38 MICRON MIN. GOLD	PK-47309-265
47309-3351			0.76 MICRON MIN. GOLD	
47309-8351			0.1 MICRON MIN. GOLD	
47309-0285	2.85	1.65	0.38 MICRON MIN. GOLD	PK-47309-265
47309-2851			0.76 MICRON MIN. GOLD	
47309-8851			0.1 MICRON MIN. GOLD	
47309-0265	2.65	1.45	0.38 MICRON MIN. GOLD	PK-47309-265
47309-2651			0.76 MICRON MIN. GOLD	
47309-8651			0.1 MICRON MIN. GOLD	

ADD NEW PART EC NO: SH2012-0261 DRAWN: GLLI CHKD: APPR: AYIN REV:	DESCRIPTION 2012/02/10 2012/02/23	QUALITY SYMBOLS $\nabla=0$ $\nabla=0$ $\nabla=0$		GENERAL TOLERANCES (UNLESS SPECIFIED) <table border="1"> <tr> <th></th> <th>mm</th> <th>INCH</th> </tr> <tr> <td>4 PLACES</td> <td>± ---</td> <td>± ---</td> </tr> <tr> <td>3 PLACES</td> <td>± ---</td> <td>± ---</td> </tr> <tr> <td>2 PLACES</td> <td>± 0.15</td> <td>± ---</td> </tr> <tr> <td>1 PLACE</td> <td>± 0.25</td> <td>± ---</td> </tr> <tr> <td colspan="3">ANGULAR ± 3°</td> </tr> </table>			mm	INCH	4 PLACES	± ---	± ---	3 PLACES	± ---	± ---	2 PLACES	± 0.15	± ---	1 PLACE	± 0.25	± ---	ANGULAR ± 3°			DIMENSION STYLE MM ONLY		SCALE 1:1		DESIGN UNITS METRIC		THIRD ANGLE PROJECTION	
			mm	INCH																											
		4 PLACES	± ---	± ---																											
		3 PLACES	± ---	± ---																											
2 PLACES	± 0.15	± ---																													
1 PLACE	± 0.25	± ---																													
ANGULAR ± 3°																															
DRAWN BY GLLI		DATE 2012/02/10		TITLE TFR HEADER WITH DETECT PIN		MOLEX		MOLEX INCORPORATED		SHEET NO. 1 OF 2																					
CHECKED BY XO ZHANG		DATE 2012/02/10		APPROVED BY AYIN		DATE 2012/02/23		MATERIAL NO. SEE TABLE		DOCUMENT NO. SD-47309-001																					
DRAFT WHERE APPLICABLE MUST REMAIN WITHIN DIMENSIONS				SIZE A2				THIS DRAWING CONTAINS INFORMATION THAT IS PROPRIETARY TO MOLEX INCORPORATED AND SHOULD NOT BE USED WITHOUT WRITTEN PERMISSION																							



TFR CARD

--- CONNECTOR PROFILE
 - - - - - CARD PROFILE

RECOMMENDED PCB LAYOUT
 TOLERANCE FOR PCB LAYOUT : ±0.05

NOTES:
 NO CONDUCTIVE EXPOSURE TRACE IS ALLOWED ON THE SIDE FACE OF THE CARD AT THIS AREA.

G4	DET
G3	POL
G2	GND
G1	GND
P8	DAT1
P7	DAT0
P6	VSS
P5	CLK
P4	VDD
P3	CMD
P2	CD/DAT3
P1	DAT2
NAME	TYPE
PIN ASSIGNMENT	

SEE SHEET 1 EC NO: SH2012-0261 DRAWING: GLL1 DATE: 2012/02/10 CHK'D: APPR: AYIN DATE: 2012/02/23	QUALITY SYMBOLS $F_A=0$ $F_C=0$ $F_P=0$	GENERAL TOLERANCES (UNLESS SPECIFIED)		DIMENSION STYLE MM ONLY	SCALE 1:1	DESIGN UNITS METRIC	THIRD ANGLE PROJECTION		
		4 PLACES ± --- ± ---	mm INCH	DRAWN BY GLL1	DATE 2012/02/10	TITLE TFR HEADER WITH DETECT PIN			
		3 PLACES ± --- ± ---		CHECKED BY XQ ZHANG	DATE 2012/02/10				
		2 PLACES ± 0.15 ± ---		APPROVED BY AYIN	DATE 2012/02/23				
		1 PLACE ± 0.25 ± ---		ANGULAR ± 3 °		MATERIAL NO.		DOCUMENT NO.	SHEET NO.
DRAFT WHERE APPLICABLE MUST REMAIN WITHIN DIMENSIONS				SEE SHEET 1		MOLEX INCORPORATED		SD-47309-001	
				SIZE A3		THIS DRAWING CONTAINS INFORMATION THAT IS PROPRIETARY TO MOLEX INCORPORATED AND SHOULD NOT BE USED WITHOUT WRITTEN PERMISSION			