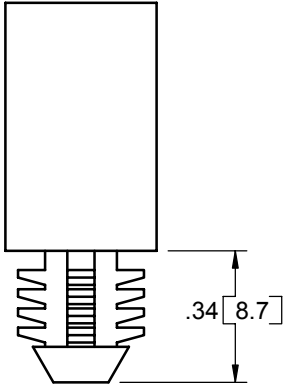
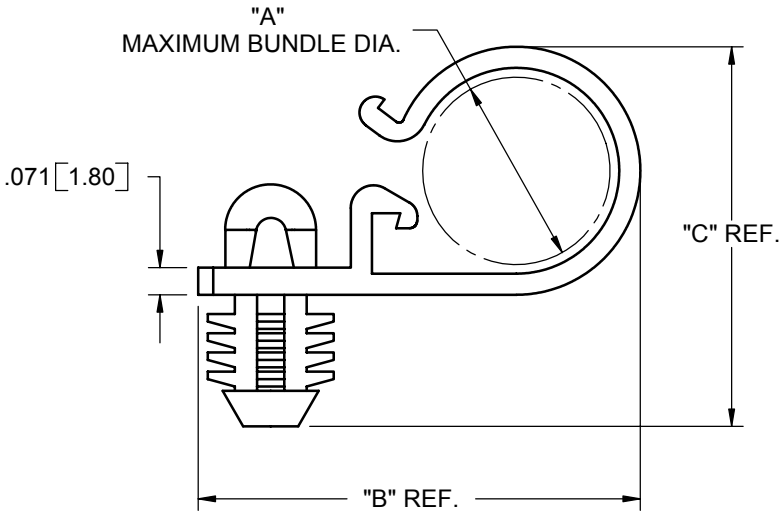
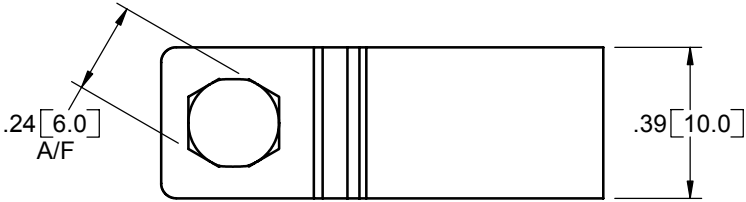


PART NO.	"A" BUNDLE DIA.	DIM. "B"	DIM. "C"
BHLWHC-500-01	1/2 [12.7]	1.15 [29.3]	1.00 [25.4]
BHLWHC-750-01	3/4 [19.0]	1.44 [36.5]	1.34 [34.1]



TO PRESS FIT INTO A .312±.002 [7.92±0.05] DIA. HOLE, IN A .250 [6.35] MINIMUM THICK PANEL

NOTES:  
 1. MATERIAL: NYLON 6/6 (RMS-01).  
 2. COLOR: NATURAL.

TITLE: BLIND HOLE LOCKING WIRE HARNESS CLIP					DWG IN IN [MM]	
CREATED USING SOLIDWORKS	FILE #: BHLWHC	DWN: SM	APP: BR	FINAL		
TOLERANCES UNLESS NOTED .XX=±.010 .XXX=±.005 FRAC.=±1/64 ANG.=±1°	SHEET: 1 OF 1	SHEET SIZE: A	DT: 11/30/04	CHKD: RDG	PART #	PRINT TYPE
RE: RICHCO, INC.	RICHCO, INC. ENG@RICHCO-INC.COM (773) 539-4060		SEE TABLE		CA	
A	RELEASED FOR PRODUCTION (ECN #884)	SM	11/30/04			
REV.	DESCRIPTION	ENGR.	DATE			