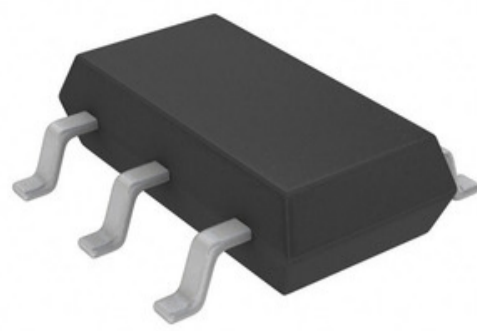




AHEAD OF WHAT'S POSSIBLE™



Mynd gæti verið framsetning.
Sjá upplýsingar um upplýsingar um vörur.

LTC1696IS6#TRMPBF

Hlutanúmer: **LTC1696IS6#TRMPBF**
 Vörulýsing: IC OVERVOLT PROT CTRLR
 RoHs Staða: Leiða frjáls / RoHS samhæft
 Gagnabið: [LTC1696IS6#TRMPBF.pdf](#)

Framleiðandi / Vörumerki: ADI (Analog Devices, Inc.)
 Skip frá: Hong Kong
 Sending vegur: DHL/Fedex/TNT/UPS/EMS

[SENDU FYRIRSPURN](#)

Upplýsingar um vörur

Hlutanúmer	LTC1696IS6#TRMPBF	Framleiðandi	ADI (Analog Devices, Inc.)
Lýsing	IC OVERVOLT PROT CTRLR	Leiða frjáls staða / RoHS staða	Leiða frjáls / RoHS samhæft
Gögn	LTC1696IS6#TRMPBF.pdf		
Spenna - Framboð	2.7 V ~ 27 V	Spenna - inntak	-
Birgir Tæki Pakki	TSOT-23-6	Röð	-
Pökkun	Tape & Reel (TR)	Pakki / tilfelli	SOT-23-6 Thin, TSOT-23-6
Önnur nöfn	LTC1696IS6#TRMPBFTR	Vinnuhitastig	-40°C ~ 125°C
Uppsetningartegund	Surface Mount	Vöktunarnæmisstig (MSL)	1 (Unlimited)
Framleiðandi staðall leiðslutími	12 Weeks	Leiða frjáls staða / RoHS staða	Lead free / RoHS Compliant
nákvæm lýsing	Power Supply Controller Overvoltage Protection Controller TSOT-23-6	Núverandi - Framboð	1.1mA
Grunneiningarnúmer	LTC1696	Umsóknir	Overvoltage Protection Controller

skyldar vörur

<p>LTC1696HS6#TRPBF Framleiðendur: ADI (Analog Devices, Inc.) Lýsing: IC OVERVOLT PROT CTRLR Sækja: LTC1696HS6#TRPBF.pdf</p> <p>RFQ</p>	<p>LTC1698EGN#PBF Framleiðendur: ADI (Analog Devices, Inc.) Lýsing: IC SECONDARY SIDE CTRLR 16SSOP Sækja: LTC1698EGN#PBF.pdf</p> <p>RFQ</p>
<p>LTC1697EMS#PBF Framleiðendur: ADI (Analog Devices, Inc.) Lýsing: IC REG SW 1W CCFL LOW PWR 10MSOP Sækja: LTC1697EMS#PBF.pdf</p> <p>RFQ</p>	<p>LTC1698ES Framleiðendur: ADI (Analog Devices, Inc.) Lýsing: IC SECONDARY SIDE CTRLR 16SOIC Sækja: LTC1698ES.pdf</p> <p>RFQ</p>
<p>LTC1698EGN#TRPBF Framleiðendur: ADI (Analog Devices, Inc.) Lýsing: IC SECONDARY SIDE CTRLR 16SSOP Sækja: LTC1698EGN#TRPBF.pdf</p> <p>RFQ</p>	<p>LTC1695CS5#TRMPBF Framleiðendur: ADI (Analog Devices, Inc.) Lýsing: IC MOTOR DRIVER I2C SOT23-5 Sækja: LTC1695CS5#TRMPBF.pdf</p> <p>RFQ</p>
<p>LTC1696HS6#TRMPBF Framleiðendur: ADI (Analog Devices, Inc.) Lýsing: IC OVERVOLT PROT CTRLR Sækja: LTC1696HS6#TRMPBF.pdf</p> <p>RFQ</p>	<p>LTC1695CS5#TRPBF Framleiðendur: ADI (Analog Devices, Inc.) Lýsing: IC MOTOR DRIVER I2C SOT23-5 Sækja: LTC1695CS5#TRPBF.pdf</p> <p>RFQ</p>
<p>LTC1696ES6#TRPBF Framleiðendur: ADI (Analog Devices, Inc.) Lýsing: IC OVERVOLT PROT CTRLR SOT23-6 Sækja: LTC1696ES6#TRPBF.pdf</p> <p>RFQ</p>	<p>LTC1696IS6#TRPBF Framleiðendur: ADI (Analog Devices, Inc.) Lýsing: IC OVERVOLT PROT CTRLR Sækja: LTC1696IS6#TRPBF.pdf</p> <p>RFQ</p>
<p>LTC1696ES6#TRMPBF Framleiðendur: ADI (Analog Devices, Inc.) Lýsing: IC OVERVOLT PROT CTRLR SOT23-6 Sækja: LTC1696ES6#TRMPBF.pdf</p> <p>RFQ</p>	<p>LTC1697EMS#TRPBF Framleiðendur: ADI (Analog Devices, Inc.) Lýsing: IC REG SW 1W CCFL LOW PWR 10MSOP Sækja: LTC1697EMS#TRPBF.pdf</p> <p>RFQ</p>

Tengd merki

ADI (Analog Devices, Inc.) LTC1696IS6#TRMPBF
 LTC1696IS6#TRMPBF Verð
 LTC1696IS6#TRMPBF PDF gagnablað
 LTC1696IS6#TRMPBF lager
 ADI (Analog Devices, Inc.) LTC1696IS6#TRMPBF
 ADI (Analog Devices, Inc.) LTC1696IS6#TRMPBF
 Analog Devices Inc. LTC1696IS6#TRMPBF

LTC1696IS6#TRMPBF dreifingaraðili
 LTC1696IS6#TRMPBF Myndir
 LTC1696IS6#TRMPBF Sækja gagnablað
 Kaupu LTC1696IS6#TRMPBF
 ADI (Analog Devices, Inc.) birgir
 AD LTC1696IS6#TRMPBF
 Analog Devices, Inc. LTC1696IS6#TRMPBF

LTC1696IS6#TRMPBF birgir
 LTC1696IS6#TRMPBF mynd
 LTC1696IS6#TRMPBF gagnablað
 Kaupu ADI (Analog Devices, Inc.) LTC1696IS6#TRMPBF
 ADI (Analog Devices, Inc.) dreifingaraðili
 ADI (Analog Devices, Inc.) LTC1696IS6#TRMPBF